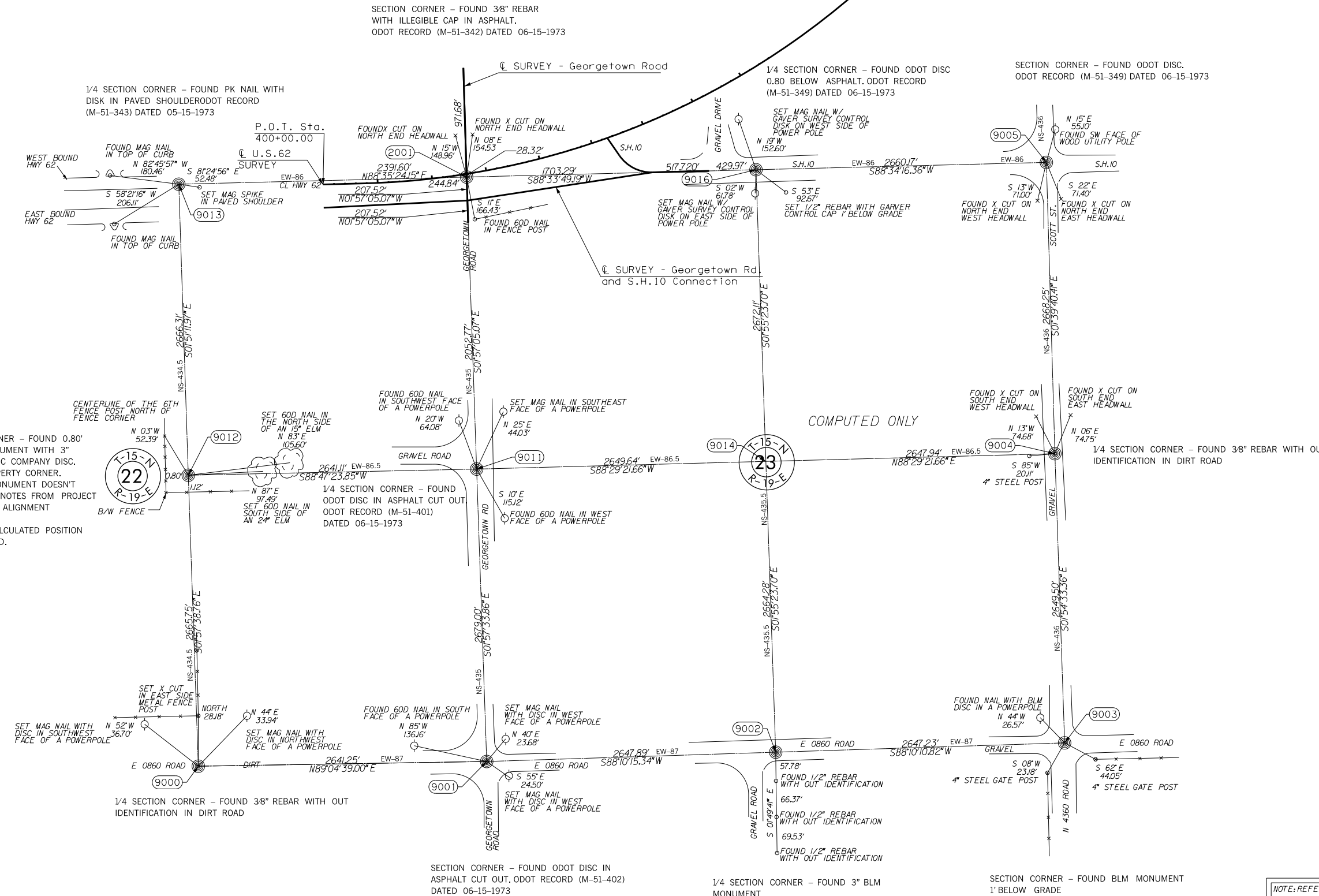


OKLAHOMA DEPARTMENT OF TRANSPORTATION					
FED. ROAD DIST. NO.	STATE	PROJ. NO.	FISCAL YEAR	SHEET NO.	TOTAL SHEETS
6	OKLA.				
DESCRIPTION		REVISIONS		DATE	



1/4 SECTION CORNER - FOUND PK NAIL WITH DISK IN PAVED SHOULDER. ODOT RECORD (M-51-343) DATED 05-15-1973

SECTION CORNER - FOUND 3/8\"/>

1/4 SECTION CORNER - FOUND ODOT DISC 0.80 BELOW ASPHALT. ODOT RECORD (M-51-349) DATED 06-15-1973

SECTION CORNER - FOUND ODOT DISC. ODOT RECORD (M-51-349) DATED 06-15-1973

CENTER 1/4 SECTION CORNER - FOUND 0.80' DIAMETER CONCRETE MONUMENT WITH 3\"/>

1/4 SECTION CORNER - FOUND ODOT DISC IN ASPHALT CUT OUT. ODOT RECORD (M-51-401) DATED 06-15-1973

1/4 SECTION CORNER - FOUND 3\"/>

SECTION CORNER - FOUND BLM MONUMENT 1' BELOW GRADE

NOTE: REFERENCE'S SHOWN ARE NOT TO SCALE.

OKLAHOMA DEPARTMENT OF TRANSPORTATION SURVEY DIVISION					
SURVEY DATA SHEET					
SHEET 10 OF 10					
PLS	RLJ				
DRAWN	JAJ				
CHECKED	PED	RLJ			
APPROVED	PED	RLJ			
CREW	LL, WW, DN, RLJ	SWO 4889 (1)	PROJECT NO. 27956(04)	SHEET NO. 26	